

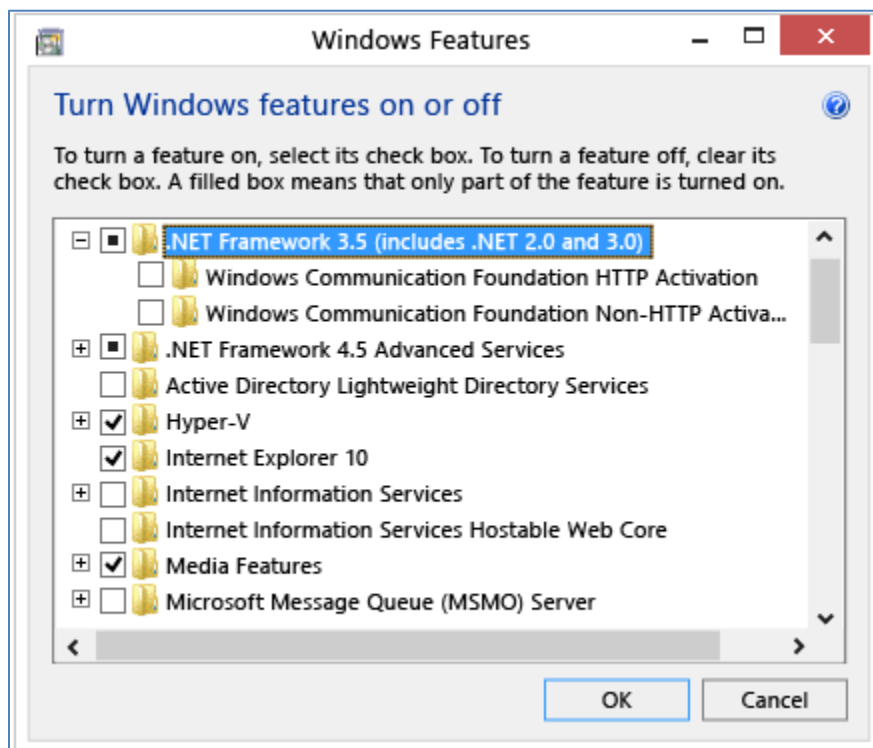
Windows® 8 and Windows 10

To run Lightel software on Windows 8, Windows 8.1, or Windows 10 you must first enable .NET Framework 3.5 on your computer.

Installing the .NET Framework 3.5 on Windows 8, 8.1 or Windows 10

The .NET Framework 3.5 is not automatically installed with Windows 8, Windows 8.1 or Windows 10. You can enable the .NET Framework 3.5 yourself through Control Panel. In Control Panel, choose Programs and Features, choose Turn Windows features on or off, and then select the .NET Framework 3.5 (includes .NET 2.0 and 3.0) check box. This option requires an Internet connection. You do not need to select the child items for Windows Communication Foundation (WCF) HTTP activation unless you are a developer who requires WCF script and handler mapping functionality.

Turning Windows features on or off in Control Panel



(This information is based on a document in the Microsoft Developer Network. The complete document can be found at [http://msdn.microsoft.com/en-us/library/hh506443\(v=vs.110\).aspx](http://msdn.microsoft.com/en-us/library/hh506443(v=vs.110).aspx).)